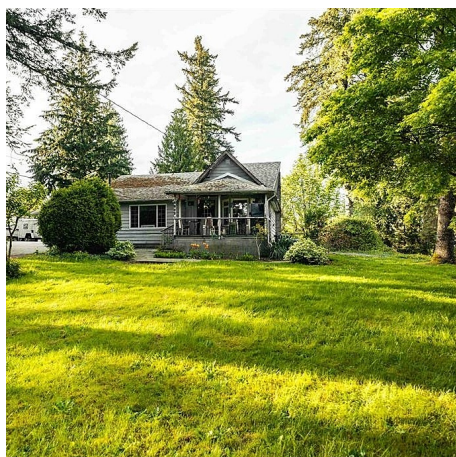
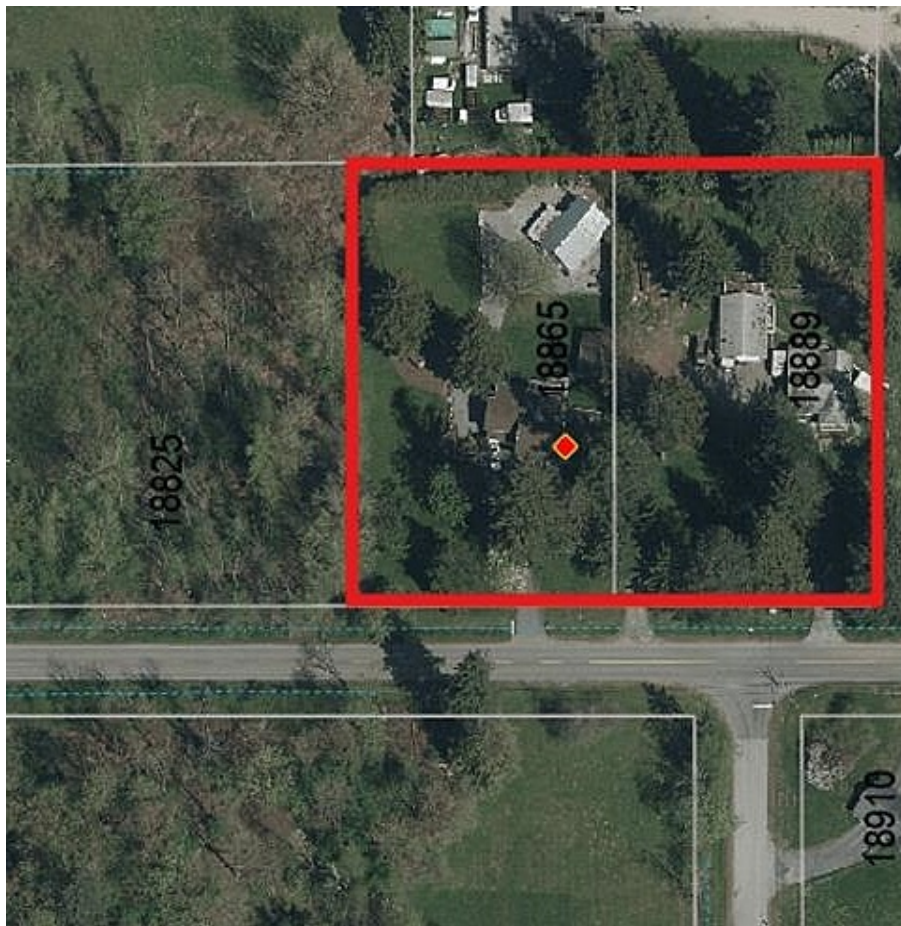


18889 92 Avenue, Surrey

\$3,500,000



Unlock the potential of this one-acre property, strategically located as part of an emerging land assembly with the neighboring property, offering a total of two acres in an area poised for growth. Situated under the Anniedale-Tynehead Neighbourhood Concept Plan (NCP), this property is designated for Mixed Employment land use, presenting an exceptional opportunity for the future development of a business park. Located along the key connector of 92 Avenue, this property boasts direct access to major routes, including Highways 1 and 15, making it a prime location for businesses seeking accessibility and visibility. Currently, the property features a rentable home providing valuable holding income, ensuring steady cash flow as you plan for future development.

KEY INFORMATION

MLS® R2952533

Residential Detached

Port Kells

4 Bedrooms

1 Bathroom

1,809 SF

43,322 SF Lot

FEATURES

Year Built: 1924

Listed By: Century 21 Coastal Realty Ltd.

rennie