

# 503 4168 Lougheed Highway, Burnaby

\$899,000



Welcome home to GILMORE PLACE 3 by ONNI, where luxury meets lifestyle! This stunning 2 bed, 2 bath residence boasts an open-concept layout w/ almost 1200 SQFT OF INDOOR/OUTDOOR LIVING, 9' ceilings, AC and bedrooms on opposite sides for maximum privacy. The European chef inspired kitchen features integrated FULGOR MILANO/BOSCHE appliances, sleek quartz countertops, double fridge. Retreat to the king size primary and spa inspired 5 piece en-suite, complete with NUHEAT floor heating. Relax on the spacious 236 sqft balcony, ideal for entertaining! Indulge in over 75,000 sqft of world class amenities, including fitness centre, pools, bowling alley, golf simulator, and more! Centrally located steps away from Skytrain, restaurants, and the Amazing Brentwood! 1 parking & 2 storage on the same floor

## KEY INFORMATION

MLS® R2952913

Residential Attached

Brentwood Park

2 Bedrooms

2 Bathrooms

945 SF

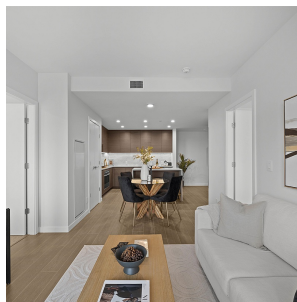
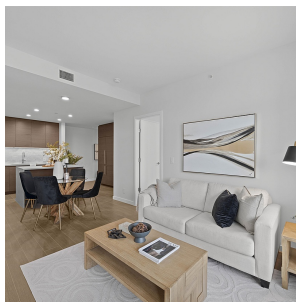
\$746.99 Maintenance Fees

## FEATURES

Year Built: 2024

Views: MOUNTAIN AND CITY

Listed By: Oakwyn Realty Northwest



rennie