

302 2550 Garden Drive, Vancouver

\$814,900



This stunning 1-bedroom + den suite at 2550 Garden Drive features 634 sqft of open and light filled space. Incredible construction quality from trusted Developer Bucci Developments. Spacious and thoughtfully designed kitchen with premium integrated Fulgor & Milano appliances, wood cabinets and quartz counter. Further features include A/C, HRV system, 9' ceilings, engineered white oak floors, ample storage solutions, built-in laundry station, custom front entry storage niche, roller-shades, USB outlets and more! Just steps to Nanaimo St and Commercial Dr., Trout Lake Park and Commercial-Broadway Skytrain. Amenities include a social lounge, expansive outdoor terrace, garden plots and children's play area. One parking and a storage locker included! Schedule your viewing today!

KEY INFORMATION

MLS® R2953496

Residential Attached

Grandview Woodland

1 Bedroom

1 Bathroom

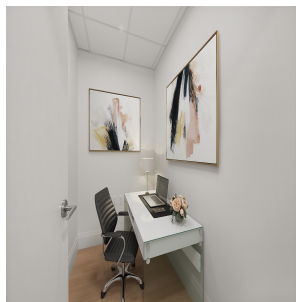
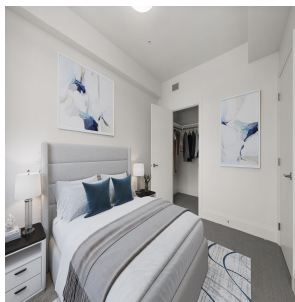
637 SF

\$358.69 Maintenance Fees

FEATURES

Year Built: 2023

Listed By: rennie & associates realty ltd.



Tyler Rodnyiuk

778.987.1365

trodyniuk@rennie.com

rennie.com/tylerrodyiuk

rennie