

# 1351 Le Burel Pl, Central Saanich

\$999,900



Charming 2BR 2bath rancher in the heart of Brentwood Bay, one of the most-desirable neighborhoods in Victoria. This home is completely move-in-ready! Inside, you will find that every room has been tastefully updated. The kitchen, eating nook & family room/work-space feature new cupboards and countertops, new appliances including gas cooktop, with plenty of cupboard and pantry space. The open LR/DR with cozy gas fireplace is a great spot for gatherings. Large Primary BR with nicely-appointed ensuite and 2nd BR with another full bath. Outside, there is a large wrap-around deck offering tons of outdoor space, leading to a nicely landscaped low maintenance yard with large garden shed for all your outdoor yard equipment. Attached double garage with space for that workshop you've always wanted, extra storage space, or even to park vehicles out of the elements! Groceries, pubs, banks and other services are steps away! (id:56120)

## KEY INFORMATION

MLS® 983723

Residential Detached

Brentwood Bay

2 Bedrooms

2 Bathrooms

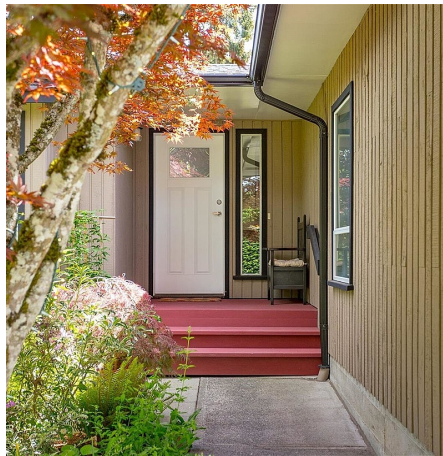
1,742 SF

8,431 SF Lot

## FEATURES

Year Built: 1984

Listed By: DFH Real Estate Ltd.



rennie