

3902 1182 Westwood Street, Coquitlam

\$888,000



Welcome to "Sophora by the Park" by renowned developer Polygon. Situated in Coquitlam Town Centre, just steps from the Lincoln SkyTrain station, this iconic tower blends urban energy with peaceful residential charm. Experience modern living with air-conditioned, elegantly designed homes featuring bright, open spaces, chef-inspired kitchens, and spa-like bathrooms, all crafted with meticulous attention to detail. Enjoy a wealth of amenities and the convenience of being minutes from schools, parks, Coquitlam Centre, highways, and hospitals. "Sophora by the Park" offers a perfect harmony of vibrant city life and tranquil nature. 2-5-10 Warranty Available.

KEY INFORMATION

MLS® R2954055

Residential Attached

North Coquitlam

2 Bedrooms

2 Bathrooms

818 SF

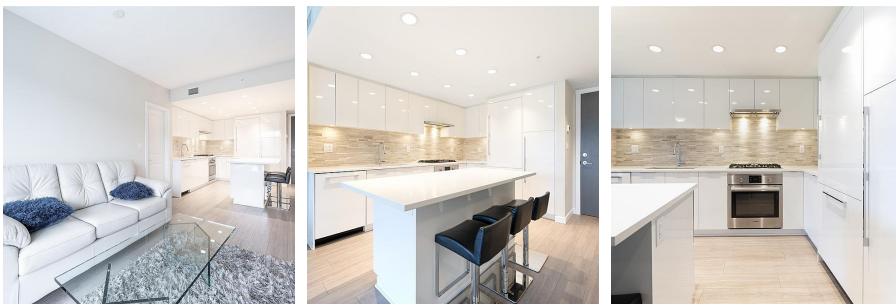
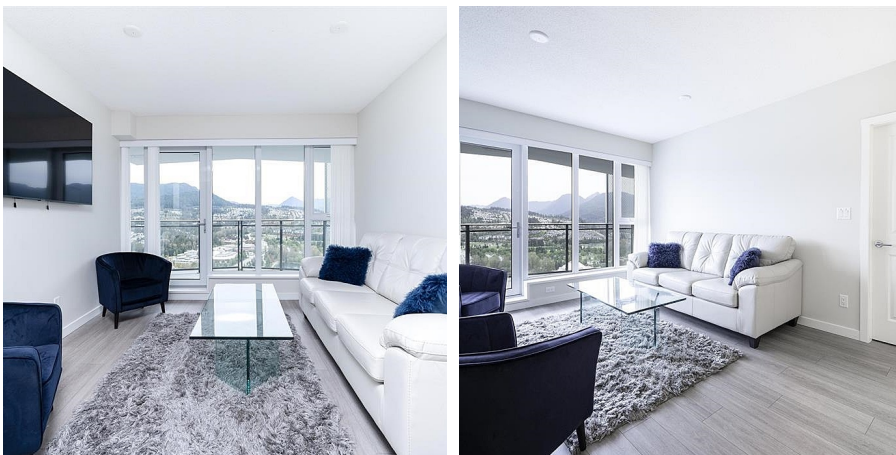
\$327.31 Maintenance Fees

FEATURES

Year Built: 2023

Views: Eagle Mt. & Coquitlam Mt.

Listed By: LeHomes Realty Premier



rennie