

3919 Quadra St, Saanich

\$1,175,000



Developers Alert! 10970 Sq Ft or .25 of an acre of land POTENTIAL for redevelopment in the desirable Maplewood neighbourhood with a charming updated 1935 character home. Located close to Quadra & Mckenzie where the future plan from Saanich is to densify the surrounding area and plan for an urban neighbourhood over time. Many updates of today blended with the character of its 1930's vintage, you will love the charm & ambiance. Updated heat pump, kitchen cupboards & counters, natural gas fireplace, wood floors throughout & period accents generous sized living room, separate dining room, kitchen that opens to the deck and back garden & 2 bedrooms. The upper loft area with skylight & 2 pce. bath offers more living space & the lower level provides in-law accommodation with 3rd bedroom and bath. The large private back yard is perfect for children to run around or for those who like to garden. This location is so convenient to downtown; is close to great shopping and schools. Call today! (id:56120)

KEY INFORMATION

MLS® 984053

Residential Detached

Maplewood

4 Bedrooms

3 Bathrooms

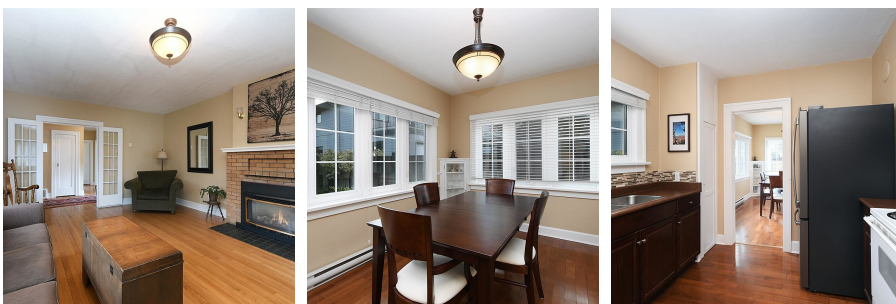
2,787 SF

10,970 SF Lot

FEATURES

Year Built: 1935

Listed By: RE/MAX Camosun



rennie