

# 4378 Briarwood Crescent, Burnaby

\$2,480,000



Renovated 2 level home with back lane at the heart of Burnaby close to Metrotown! Features w/3 bedrooms on the main floor & mortgage helper in basement with separate entry. Situated on the high side of the street taking advantage of the Mountain VIEW. South-facing backyard with 170SF covered deck. 2010 large kitchen w/glass tile back-splash, granite counters, S/S appls. Beautifully finished hardwood floors. Newer windows. Exterior painted 2016. 2013 high efficiency furnace. Newer tub. Close to Wesburn Park, Moscrop School & transit. Centrally located in popular Garden Village! Move in now or hold for long-term investment! Ready for 6 plex development!

## KEY INFORMATION

MLS® R2953405

Residential Detached

Garden Village

5 Bedrooms

3 Bathrooms

2,400 SF

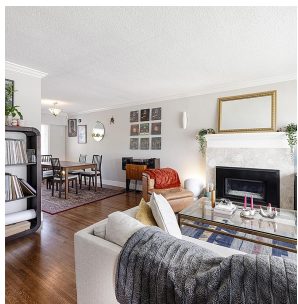
6,776 SF Lot

## FEATURES

Year Built: 1954

Views: MOUNTAINS

Listed By: Interlink Realty



rennie