

# 11885 264 Street, Maple Ridge

\$2,399,000



Welcome to this stunning 16-acre court sale property offering unparalleled privacy. The custom-built 3-bedroom, 4-bath home features soaring 20-foot ceilings and exquisite design. Additional highlights include a spacious detached workshop, a secondary residence, and convenient RV parking. The property is enhanced by a unique bridge crossing a creek that runs through the land—the only bridge of its kind in the neighborhood. With a 2024 BC Assessment value of \$2.66 million, this property is brimming with potential. The property sale as its conditions. Don't miss this rare opportunity!

## KEY INFORMATION

MLS® R2954647

Residential Detached

Websters Corners

1 Bedroom

0 Bathrooms

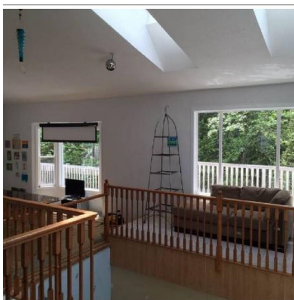
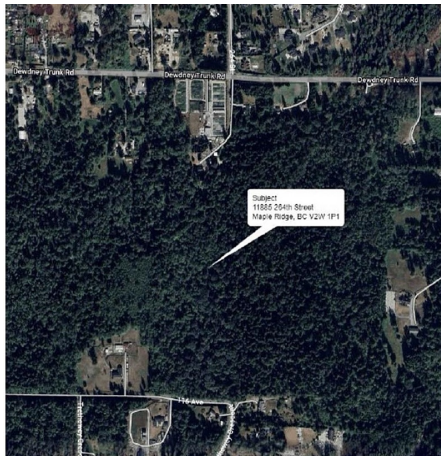
4,274 SF

696,960 SF Lot

## FEATURES

Year Built: 1992

Listed By: Pacific Evergreen Realty Ltd.



rennie