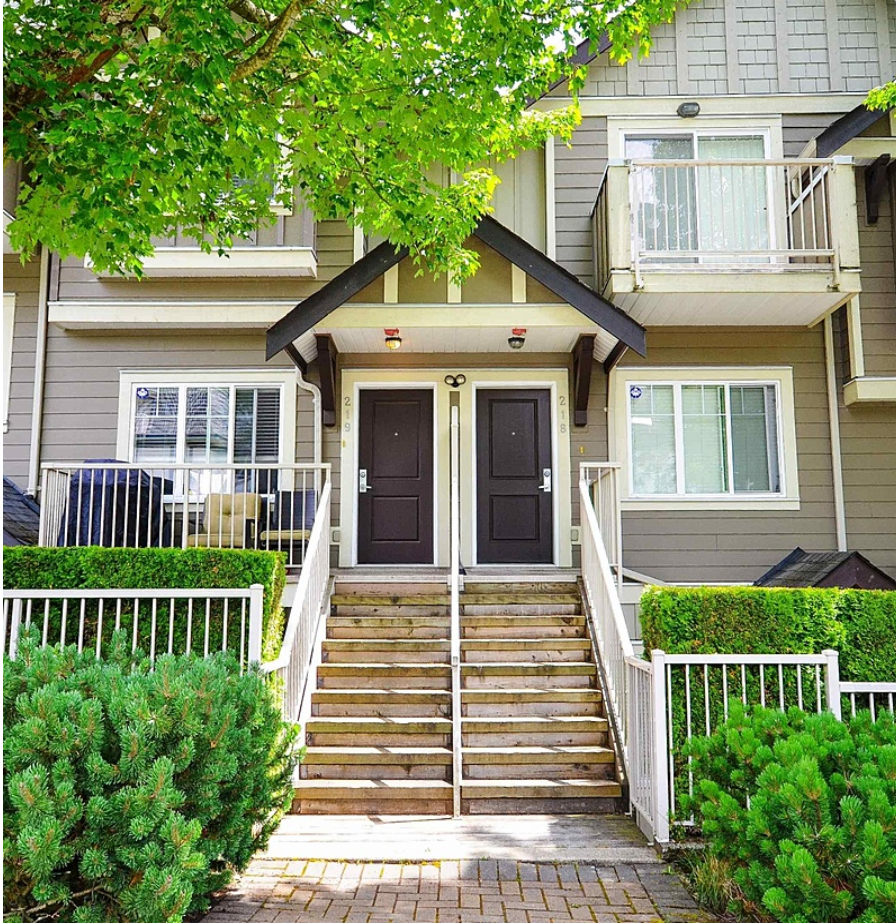


219 368 Ellesmere Avenue, Burnaby

\$829,888



Hilltop Greene is a boutique collection of 32 luxurious townhomes in the prestigious Capital Hill area. This bright and spacious 2-level home features 2 bedrooms, 2 full baths, 9-foot ceilings, an open concept kitchen and granite countertops, a center island, stainless steel appliances, and laminate flooring throughout. Comes with 1 secured underground parking and 1 storage locker. Enjoy spa-inspired bathrooms and solid Ceasar-stone-countertops, lavish sinks, and beautiful tile work. The building boasts HardiPlank sidings, Energy Star windows, and 2" blinds. Walking distance to transit, restaurants, shops, parks, and high ranking schools, including Capital Hill Elementary, and Burnaby North Highschool.

KEY INFORMATION

MLS® R2954820

Residential Attached

Capitol Hill

2 Bedrooms

2 Bathrooms

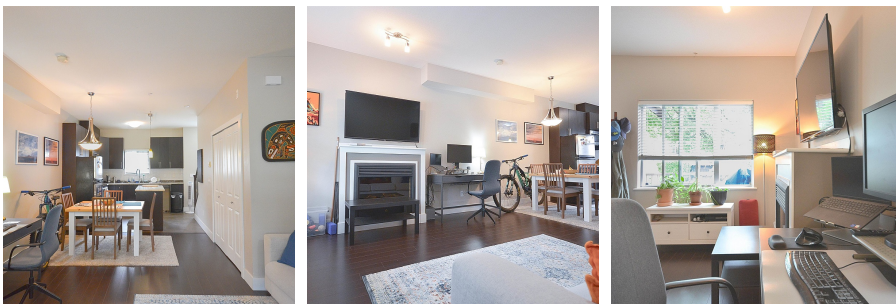
958 SF

FEATURES

Year Built: 2009

Views: PARTIAL SOUTH TOWARD METROTOWN

Listed By: Multiple Realty Ltd.



rennie