

1409 Pipeline Place, Coquitlam

\$2,880,000



Located in the center of Coquitlam! This stunning brand new house it's on approx 6200sqft lot with about 4500sqft indoor size. The main level has open layout, radiant heat engineer hardwood floorings, air conditioning, HRV, SS appliances, lots of detailed finishing features. There are 4 ensuite above with lots of space and greenbelt view. Basement has 2 bed legal suites and media room. Welcome to book viewings & Motivated to Sell! Open house: Jan 25/26 Sat/Sun 2-4.

KEY INFORMATION

MLS® R2954873

Residential Detached

Hockaday

8 Bedrooms

7 Bathrooms

4,490 SF

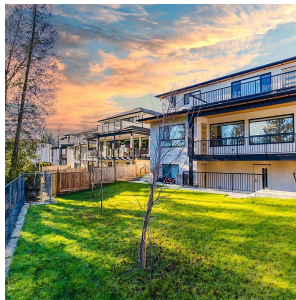
6,195 SF Lot

FEATURES

Year Built: 2023

Views: Greenbelt

Listed By: RE/MAX Crest Realty



rennie