

215 11665 Haney Bypass, Maple Ridge

\$588,000



Tranquility! An ideal layout, outlook and size for a first-time home Buyer in need of a second bedroom and a home office. This spacious 2 bedroom, 2 bath condo is in one of the best locations of the complex, with an outlook perfect for sunset views on your ultra private patio overlooking a greenbelt. "Haney Landing" has a solid reputation and upkeep history, it has a guest suite, fitness room and bike storage. The unit has an additional storage locker (7ft) and full sized parking stall. The kitchen features granite countertops w/ wood cabinetry, very open concept and super for entertaining! With direct commuter routes such as Lougheed Highway and the West Coast Express (just steps away) as well as trails at your doorstep down to Haney Wharf and the newly update Beckett Park! It's a winner!

KEY INFORMATION

MLS® R2955317

Residential Attached

West Central

2 Bedrooms

2 Bathrooms

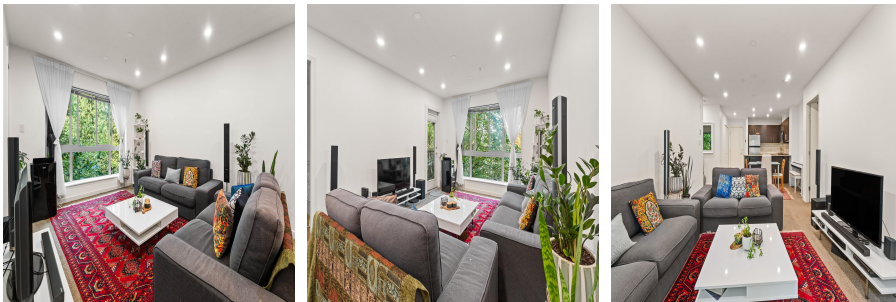
961 SF

\$406.00 Maintenance Fees

FEATURES

Year Built: 2007

Listed By: Real Broker



rennie