

# 17 15255 Sitka Drive, Surrey

\$999,000



Discover the perfect blend of nature and modern living in this nearly-new duplex-style townhome at Wood & Water by Anthem. Start your day with a scenic walk at Surrey Lake Park, a round of golf, or relax at the exclusive "Treehouse" amenities. This home features 4 bedrooms, 4 bathrooms, and convenient laundry on the bedroom level. With premium finishes, high-end appliances, a double-car garage, and peaceful green space views, it offers privacy and comfort. Two oversized bedrooms provide primary-suite vibes for added flexibility. Enjoy access to the gym, coworking space, and lounge, plus proximity to Westfield and Guildford Country Club.

## KEY INFORMATION

MLS® R2952532

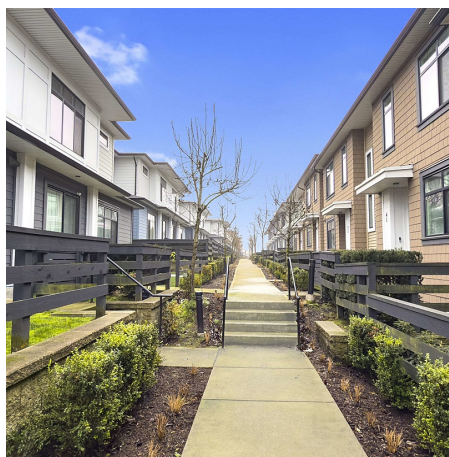
Residential Attached

Fleetwood Tynehead

4 Bedrooms

4 Bathrooms

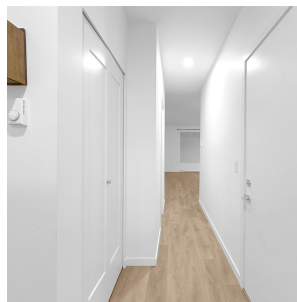
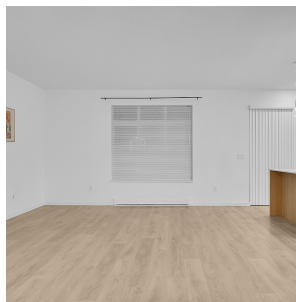
1,735 SF



## FEATURES

Year Built: 2021

Listed By: Woodhouse Realty



rennie