

# 112 3205 Mountain Highway, North Vancouver

\$1,249,888



GROUND FLOOR 3BED 2BATH WALK-UP(like a townhouse!) ON QUIET SIDE OF BUILDING FACING GREENBELT. Built by reputable MARCON and LEED certified for maximum efficiency. Premium appliances & modern finishes throughout. Custom stone wall and fireplace in the living room, AND a bonus XL private patio situated on the edge of Hastings creek trail. Directly across from Lynn Valley Elementary and a short walk to Lynn Valley shopping center, transit, and lots more. 2 SBS parking stalls and a proper roll-up storage locker included. Bonus bike storage and dog wash station. Don't delay call today!

## KEY INFORMATION

MLS® R2955532

Residential Attached

Lynn Valley

3 Bedrooms

2 Bathrooms

1,056 SF

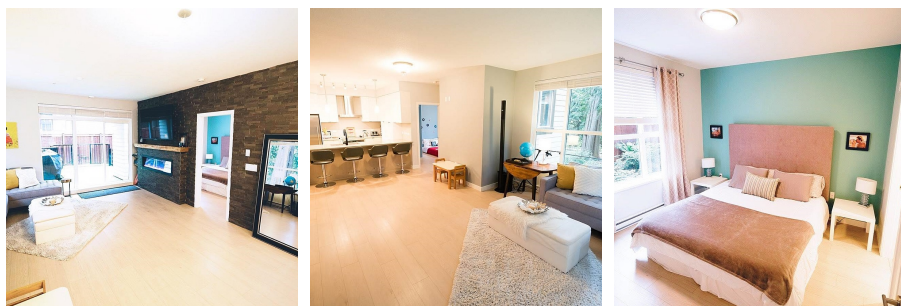
\$467.30 Maintenance Fees

## FEATURES

Year Built: 2016

Views: HASTINGS CREEK TRAIL

Listed By: RE/MAX LIFESTYLES REALTY



rennie