

6 1050 Finch Drive, Squamish

\$1,598,900



Mountain and valley views! Discover The Madden at Finch Drive by respected local developer-builder Diamond Head Development. At 2,751 sq. ft., this spacious West Plan duplex home offers room to grow. Featuring 3 bedrooms + Rec , 2.5 bathrooms, and a double car garage; this modern home offers over height ceilings and sleek modern finishes in a tranquil yet connected setting. Just minutes from downtown Squamish and surrounded by nature, Finch Drive is the ideal Squamish location. Geothermal heating/cooling and option for solar panel package to make the home Net Zero!

KEY INFORMATION

MLS® R2955888

Residential Attached

Brennan Center

3 Bedrooms

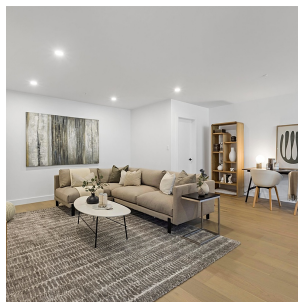
3 Bathrooms

2,751 SF

FEATURES

Year Built: 2025

Listed By: DHD Realty



rennie