

302 33535 King Road, Abbotsford

\$439,900



A must see if looking for an Immaculate and Bright Corner, TOP Floor 2 bedroom, 2 bathroom and 55+! This home has been beautifully updated, great floor plan, almost 1200sqft. New flooring. Updated kitchen is spacious w/quartz counters, extra cabinetry added and a breakfast island overlooking wrap around SW facing balcony. Lvgrm and dining open. Bedrooms are super private, on either side of home. Primary bdrm is large w/updated ensuite. 2nd bdrm w/vaulted ceil. Skylight and an abundance of windows for great natural light. 2 Storage Lockers, one on same floor for added convenience! In a central location, this building offers immense amenities to enjoy..Social gathering dining area, crafts room, exercise, games room, attached workshop and guest suites for visitors!~

KEY INFORMATION

MLS® R2955744

Residential Attached

Poplar

2 Bedrooms

2 Bathrooms

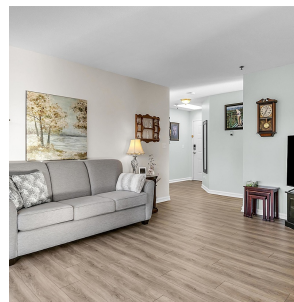
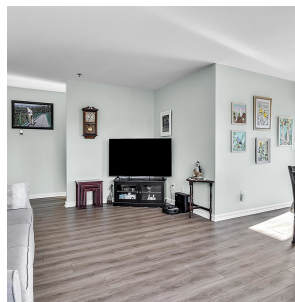
1,188 SF

\$449.62 Maintenance Fees

FEATURES

Year Built: 1990

Listed By: Lighthouse Realty Ltd.



rennie