

188 1331 Olmsted Street, Coquitlam

\$1,298,000



Welcome to Riley Park on Burke Mountain! This luxurious 4 bed and 3 bath townhome is a must see. With a living space over 1500 sq. ft. it features 10' ceiling on the main floor, bright south-facing kitchen with big center island, stainless steel appliances, quartz counter-top, upgraded light fixtures & open floor plan. Good size balcony for summer BBQ. Three spacious bedroom and laundry room sit on the top floor. Master ensuite has double sinks, separate shower stall and soaker tub. Another full bath serves the remaining two bedrooms. The 4th bedroom/office is privately located in the basement. Side by side double car garage with ample storage space. Steps to 3.5 acres of park, trails and cafe. Only 2 year young with remaining of the new home warranty. OPEN HOUSE SAT.2-4 PM, SUN 3-5 PM.

KEY INFORMATION

MLS® R2955974

Residential Attached

Burke Mountain

4 Bedrooms

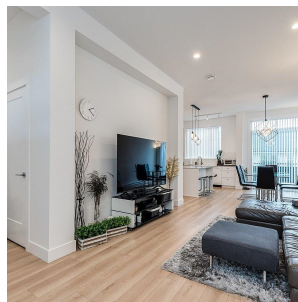
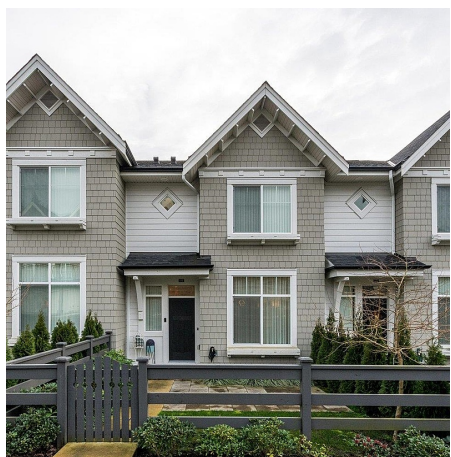
3 Bathrooms

1,557 SF

FEATURES

Year Built: 2023

Listed By: Royal Pacific Realty (Kingsway) Ltd.



rennie