

409 2242 Whatcom Road, Abbotsford

\$594,900



Discover the perfect condo lifestyle at WATERLEAF in EAST ABBOTSFORD! This immaculate, TOP-FLOOR, SOUTH-FACING unit boasts stunning views of Mt. Baker and the valley. The open-concept layout is flooded with natural light, featuring two spacious bedrooms on opposite sides and two bathrooms. Enjoy the views from your living room with electric fireplace and bright, white kitchen with stone countertops, stainless steel appliances, and a large WALK-IN PANTRY. The resort-style complex offers fantastic amenities, including an outdoor pool, hot tub, fitness room, and clubhouse. TWO SIDE BY SIDE PARKING AND STORAGE LOCKER. Convenience is key, located just a short walk to shopping, dining, and easy access to Hwy 1. This home is the perfect blend of comfort and practicality.

KEY INFORMATION

MLS® R2956177

Residential Attached

Abbotsford East

2 Bedrooms

2 Bathrooms

885 SF

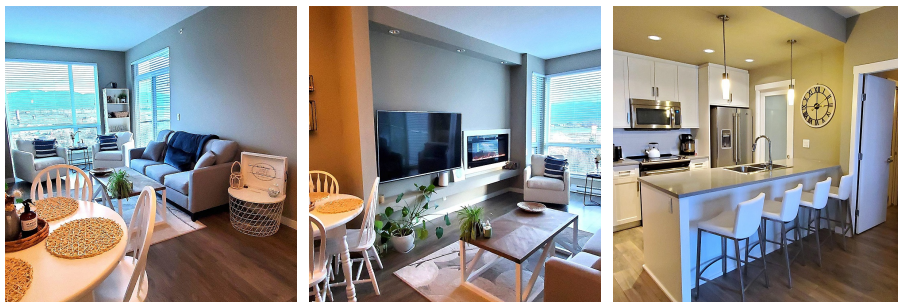
\$508.19 Maintenance Fees

FEATURES

Year Built: 2015

Views: MT. BAKER, SUMAS PRAIRIE

Listed By: One Percent Realty Ltd.



rennie