

3002 1188 Pinetree Way, Coquitlam

\$620,000



Welcome to iconic M-Three, a 48-storey tower in the heart of Coquitlam Center, quality built by renowned Cressey Development. This rarely available freshly painted 1-bed CORNER home features the famous "Cressey Kitchen" w/ massive 48" double fridge, integrated appliances, 5 burner gas range, wine cooler, wide living & dining area next to corner windows, spacious bedrm w/ walk-in-closet, & NuHeat floor in bathrm. Enjoy open SW views of sunset, mountains, & city. Experience luxury amenities in the 2-level SkyLounge on top floors 47/48. Convenient living that's steps to Skytrain, Coq Center, Lafarge Lake, Douglas College, Aquatic Center, and variety of restaurants, shops and services. Don't miss out on this stunning home, incl 1 parking & 1 locker.

KEY INFORMATION

MLS® R2956262

Residential Attached

North Coquitlam

1 Bedroom

1 Bathroom

576 SF

\$316.15 Maintenance Fees

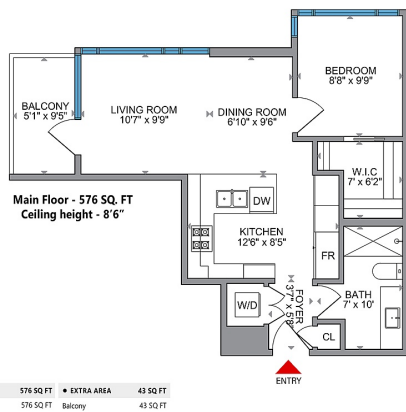
FEATURES

Year Built: 2016

Views: city, mountain

Listed By: rennie & associates realty ltd.

8 Pinetree Way Coquitlam



Calvin Jiang
604.961.1698
cjiang@rennie.com
rennie.com/calvinjiang

rennie