

203 9131 Capella Drive, Burnaby

\$496,500



Welcome to Mountain Woods, a RARE 16+ Acres of Wooded Land, with walking paths that weave all throughout this landscaped property! This 925 SQFT SW CORNER home features 2 LARGE bedrooms, large laundry room/ storage, OPEN PLAN Living/ Dining area and a bright Kitchen located just off the 70+ SQFT SW corner balcony. The Complex amenities include an OUTDOOR POOL, HOT TUB AND GYM. Perfect for families and or investors, close to schools, parks, transit, sky train and Lougheed Mall. Hurry!!

KEY INFORMATION

MLS® R2956195

Residential Attached

Simon Fraser Hills

2 Bedrooms

1 Bathroom

925 SF

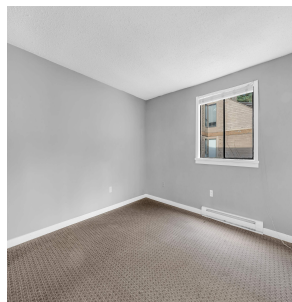
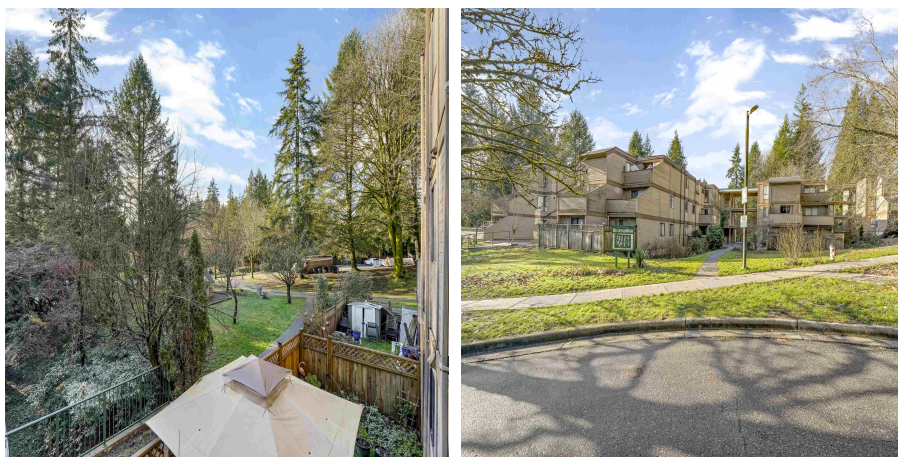
\$556.36 Maintenance Fees

FEATURES

Year Built: 1976

Views: Forest

Listed By: Sutton Group-West Coast Realty



rennie