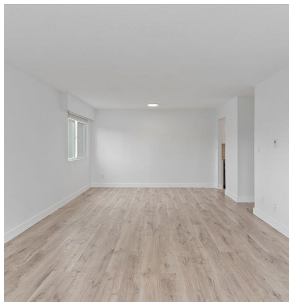
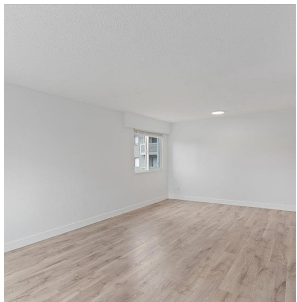
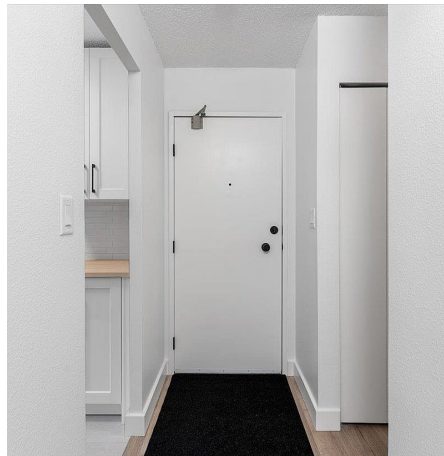


212 12096 222 Street, Maple Ridge

\$449,900



Step into the market with this beautifully renovated 2-bedroom corner unit in Maple Ridge! Located on the 2nd floor of Canuck Plaza, this move-in-ready gem boasts over \$35,000 in quality updates, a modern kitchen with stainless steel appliances, including a dishwasher, spacious bedrooms with custom closet organizers, and stunning views of Haney Nokai Park and Golden Ears from the covered balcony. With heat included in strata fees and a new A/C unit, enjoy year-round comfort and energy savings. Just 1 km from the West Coast Express! No rental or age restrictions, two storage lockers, parking, and a welcoming community. Don't miss out—this is the perfect starter home!

KEY INFORMATION

MLS® R2956286

Residential Attached

West Central

2 Bedrooms

1 Bathroom

866 SF

\$448.01 Maintenance Fees

FEATURES

Year Built: 1971

Views: PEEK-A-BOO GOLDEN EARS

Listed By: Royal LePage Elite West

rennie