

9 12191 228 Street, Maple Ridge

\$1,059,900



Your home search ends here! Fall in love with this 2400 s.f. End-Unit townhome in the small 10 unit self-managed "Gold Creek Estates". The open concept main floor is well appointed with gleaming wood and tile floors, offering a large entertainer's kitchen with stone counters and S/S appliances. There's a large dining area and an oversized living room with cozy gas fireplace. Upstairs are 4 generous sized bedrooms including a massive primary with huge walk-in closet and spa-like 5 piece ensuite. The fully finished basement offers a 4th bathroom, large rec room and family room which would make a great home theatre, or 5th bedroom if needed. Property offers parking for 4 vehicles, and an ample fully fenced rear yard for your families enjoyment. Pet friendly complex. This home sparkles!

KEY INFORMATION

MLS® R2956618

Residential Attached

East Central Maple Ridge

4 Bedrooms

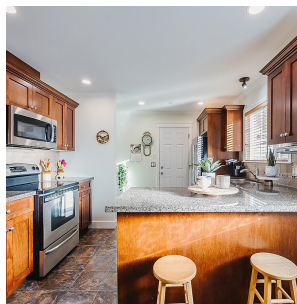
4 Bathrooms

2,361 SF

FEATURES

Year Built: 2010

Listed By: Royal LePage Elite West



rennie