

# 2101 1201 Marinaside Crescent, Vancouver

\$1,298,000



The Peninsula by Concord - one of Yaletown's best buildings. Step into this STUNNING 2 BED 2 BATH DEN & FLEX w/BREATHTAKING WATER views. Start your day from an indulgent KING sized primary w/his her closets & spa like bath. The chef's kitchen w/updated appls, granite counters & bonus window make cooking a pleasure. A spacious living & dining area w/full height windows & lovely corner DEN for a home office. BRAND NEW flooring, lighting, paint, window coverings & hood fan. Convenient FLEX for in-suite storage & 1 EV parking. Full amenities inc concierge, gym, pool, hot tub, sauna & media room. Walk out from a grand lobby & onto the Seawall, Urban Fare, Starbucks, Roundhouse Ctr, David Lam Park, Skytrain & all your Yaletown favorites. Some photos virtually staged. OPEN JAN 18/19, 1:30-3:30

## KEY INFORMATION

MLS® R2956768

Residential Attached

Yaletown

2 Bedrooms

2 Bathrooms

983 SF

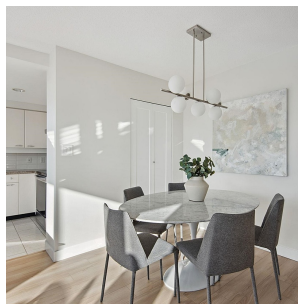
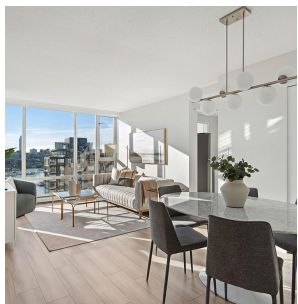
\$782.97 Maintenance Fees

## FEATURES

Year Built: 1996

Views: WATER, CITY, SOME MOUNTAINS

Listed By: rennie & associates realty ltd.



**Danny Chow** PREC\*  
604.765.2469  
dchow@rennie.com  
rennie.com/dannychow



**Salina Kai** PREC\*  
604.773.7013  
skai@rennie.com  
rennie.com/salinakai

**rennie**