

# 3110 Rutledge St, Victoria

\$989,900



Situated near Mayfair Mall and Topaz Park, this charming 5-bedroom, 3-bathroom house offers the perfect blend of convenience and tranquility. Whether you prefer a peaceful walk in the park or a shopping spree at the nearby mall, everything is just steps away! Located in Victoria and surrounded by lush greenery and parks, this serene home is a true gem. The property includes a 2-bedroom, 1-bathroom in-law suite, ideal for extended family or guests. This family-friendly neighborhood provides easy access to the Galloping Goose Trail, Rutledge Park, bus exchange center, grocery stores, and is only 10 minutes from Downtown Victoria. Don't miss this fantastic opportunity to live in a prime location with so many conveniences. Call today to schedule a viewing! (id:56120)

## KEY INFORMATION

MLS® 984541

Residential Detached

Mayfair

5 Bedrooms

3 Bathrooms

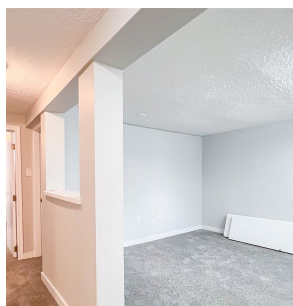
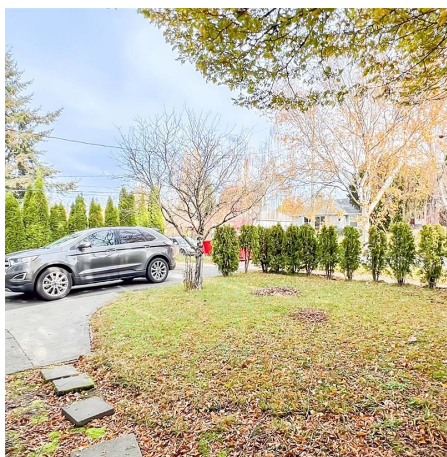
2,340 SF

5,227 SF Lot

## FEATURES

Year Built: 1946

Listed By: eXp Realty



rennie