

# 1376 Peakeside Place, Squamish

\$1,349,000



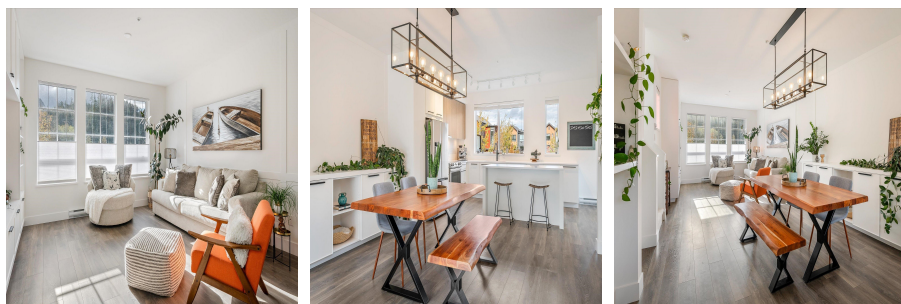
Experience unparalleled living in this stunning 4-bedroom corner townhome in the highly coveted SEAandSKY community. Boasting the largest floor plan in the complex, this former model home features a double car garage and extensive built-ins throughout. Revel in the breathtaking, south-facing panoramic views of the Chief, community gardens, and mountains. Perfectly situated near the future activity center, which will include a pool and fitness center, and the soon-to-be-completed pedestrian bridge to downtown. Don't miss out on this rare opportunity for luxury and convenience! GST has been paid.

## KEY INFORMATION

MLS® R2957125  
Residential Attached  
Valleycliffe  
4 Bedrooms  
4 Bathrooms  
1,792 SF

## FEATURES

Year Built: 2020  
Views: The Chief  
Listed By: Stilhavn Real Estate Services



rennie