

6 9866 Pemberton Portage Road, D'arcy

\$929,000



This 10-acre off-grid property offers an exceptional opportunity for sustainable living with income potential. Located just 2 minutes from Anderson Lake and backed by Haylmore Creek, it's a private retreat. With a recently updated solar system, 8000W inverter, and a 10,000W propane generator, power is reliable. The property includes a Tiny Home, a large shop, pump house with water treatment system, and a 3-season bathhouse. Enjoy a ¾-acre garden, 17 fruit trees, and livestock potential. Future development awaits with a cleared build site for your dream home.

KEY INFORMATION

MLS® R2957167

Residential Detached

D'arcy

0 Bedrooms

1 Bathroom

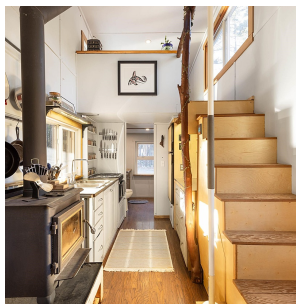
372 SF

FEATURES

Year Built: 2015

Views: Mountains

Listed By: Whistler Real Estate Company Limited



rennie