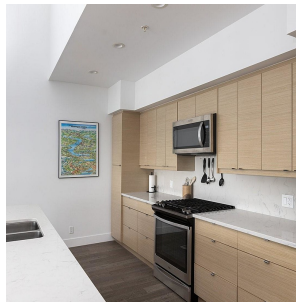


404 10660 Mcdonald Park Rd, North Saanich

\$780,000



Discover uncompromised living at Regatta Park, where modern design meets quality comfort. This 2-bed / 2 bath corner penthouse boasts soaring vaulted ceilings up to 15ft, complemented by transom windows flooding the space w/ natural light. With over 1200 sq ft of finished indoor living space & a 300+ sq ft balcony with southeast exposure and breathtaking views of Mt. Baker, this home offers oversized living ideal for entertaining. The open concept layout seamlessly connects each room, while the primary bedroom features a spacious layout, a large walk-through closet, & a luxurious spa ensuite complete w/ dual sink vanity & heated flooring. Outside, enjoy a gas BBQ hookup & hose bib for added convenience. Kitchen highlights include SS appliances, quartz counter tops & soft close cabinetry w/ task lighting. This home includes 2 parking stalls & a secure storage locker ensuring both comfort and practicality. Located just a short stroll from downtown Sidney, residents can enjoy easy access to shops, restaurants, beaches, markets, parks, & marinas. (id:56120)



KEY INFORMATION

MLS® 983618

Residential Attached

Sandown

2 Bedrooms

2 Bathrooms

1,540 SF

1,220 SF Lot

FEATURES

Year Built: 2020

Listed By: Macdonald Realty Ltd. (Sid)

rennie