

100 19451 Sutton Avenue, Pitt Meadows

\$1,279,900



Craftsman inspired duplex, 1919 SF 4 bed 3.5 bath with a balcony and private yard in a well established community. Features include A/C, Laminate flooring throughout, on-demand hot water system, and overheight ceiling in living, kitchen and dining area with vaulted ceiling in the bedrooms make this home the perfect place to relax or entertain. Chef inspired kitchen features premium appliance package with 36" integrated Fulgor Milano fridge, 5-burner Fulgor Milano stove integrated with natural stone counter tops and back splash. Amenities include an outdoor pool, hot tub, gym, Golf Simulator, lounge, Indoor Kids play room, games room, Outdoor playground and sports court. 2 car side by side private garage.

KEY INFORMATION

MLS® R2957289

Residential Attached

South Meadows

4 Bedrooms

4 Bathrooms

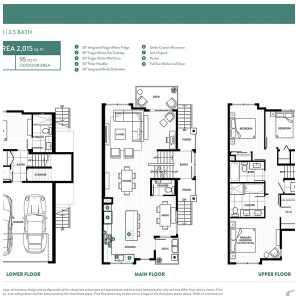
1,919 SF

FEATURES

Year Built: 2025

Views: Partial Mountain Views

Listed By: Onni Realty Inc



rennie