

15 19451 Sutton Avenue, Pitt Meadows

\$1,239,900



Craftsman inspired duplex home, 1919 SF 4 bed 3.5 bath with a balcony and private yard in a well established community. Features include A/C, on-demand hot water system, and overheight ceiling in living, kitchen and dining area with vaulted ceiling in the bedrooms make this home the perfect place to relax or entertain. Chef inspired kitchen features premium appliance package with 36" integrated Sub Zero fridge, 36" 6-burner Wolf stove integrated with quartz counter tops and back splash. Additional upgraded millwork package throughout. Amenities include an outdoor pool, hot tub, gym, Golf Simulator, lounge, Indoor Kids play room, games room, Outdoor playground and sports court. 2 car private garage.

KEY INFORMATION

MLS® R2957315

Residential Attached

South Meadows

4 Bedrooms

4 Bathrooms

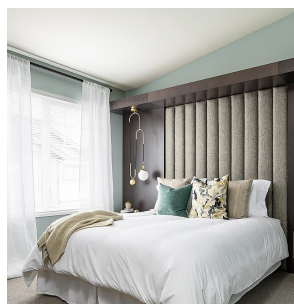
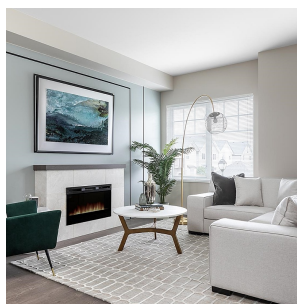
1,919 SF

FEATURES

Year Built: 2019

Views: Partial Mountain Views

Listed By: Onni Realty Inc



rennie