

13567 13a Avenue, Surrey

\$4,680,000



A rare and valuable full ocean-view property in South Surrey, situated on flat terrain on a hillside by the sea. It is far from traffic and noise, offering a quiet and highly private community environment. The massive 17,294-square-foot lot faces south towards the ocean. The lot is approximately rectangular in shape, with a southern frontage of 105 feet and a depth greater than 169 feet, offering potential for subdividing into two lots. Whether for self-living, builders, or investors, this is an excellent choice!

KEY INFORMATION

MLS® R2956714

Residential Detached

Crescent Beach

1 Bedroom

4 Bathrooms

4,962 SF

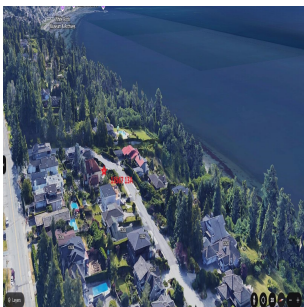
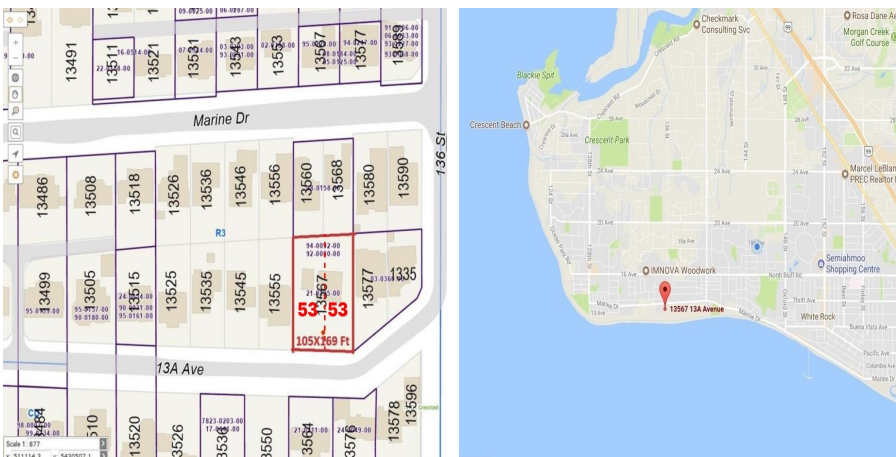
17,294 SF Lot

FEATURES

Year Built: 9999

Views: Panoramic Ocean view

Listed By: LeHomes Realty Premier



rennie