

# 3415 Horizon Terr, Langford

\$1,149,000



Discover modern elegance in this impressive half duplex on Triangle Mountain, crafted by Designated Developments. With 3 bedrooms and 3 bathrooms, this home features a spacious third-floor loft. The main floor boasts a primary suite with an ensuite, and an open-concept kitchen, dining, and living area perfect for entertaining. The kitchen combines style and functionality, while the cozy living room features a gas fireplace. The versatile walkout basement, with a separate entrance, offers endless possibilities—create an entertainment room or a one-bedroom in-law suite. Additional highlights include a spacious single-car garage and ample driveway parking. Close to golf and all amenities. Price is plus GST. Don't miss this exceptional opportunity! (id:56120)

## KEY INFORMATION

MLS® 983296

Residential Attached

Walfred

3 Bedrooms

3 Bathrooms

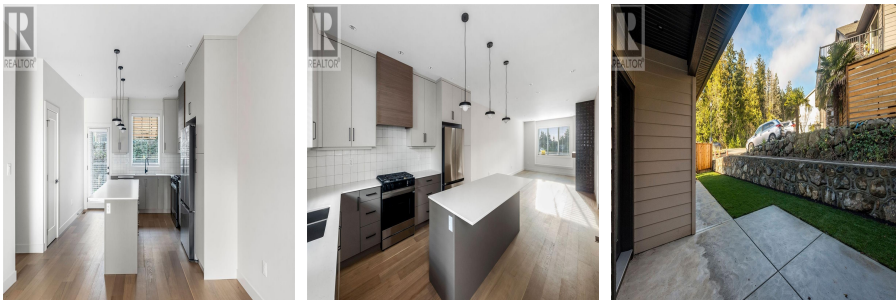
3,144 SF

9,178 SF Lot

## FEATURES

Year Built: 2024

Listed By: Maxxam Realty Ltd.



rennie