

1965 Townley St, Saanich

\$1,050,000



This is a fantastic location within the Saanich Panhandle. Bordering Oak Bay and Saanich. Across the street from Allenby Park. Walking distance to schools, shops, Oak Bay recreation, Camosun College, and numerous parks. Imagine watching the kids play right across the street. First time for sale in 40 years. Solid 1965 bungalow offering 3 bedroom main floor and full height basement for further development. Bring your paintbrush and build some sweat equity. Executors of the estate are very proud to be offering this wonderful opportunity to get into one of the finest areas Victoria has to offer. Call now for an appointment to view. (id:56120)

KEY INFORMATION

MLS® 984333

Residential Detached

Camosun

3 Bedrooms

1 Bathroom

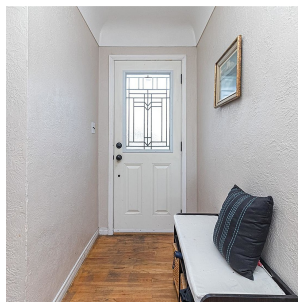
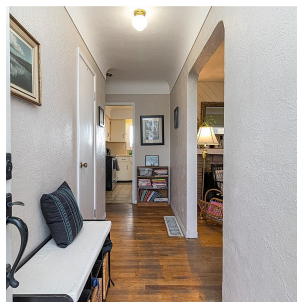
2,375 SF

7,190 SF Lot

FEATURES

Year Built: 1961

Listed By: Pemberton Holmes Ltd - Sidney



rennie