

2 5257 Markel Drive, Chilliwack

\$898,000



This Beautiful & Modern Family home is perched in the highly coveted & affluent community of PROMONTORY. Situated along a private tree lined street, this fully custom & newly renovated residence is the epitome of upscale living. The basement area could easily be suited for the in-laws/ extended family. Upstairs has 3 spacious bedrooms and boasts a bright & spacious open concept. The floorplan flows seamlessly to meet your everyday needs. Step into your private fully fenced backyard oasis with a grand entertaining deck, perfect for kids and pets to enjoy. With proximity to shopping, Promontory Elementary school, parks and trails, an effortless lifestyle awaits! NO STRATA FEES! OPEN HOUSE: Saturday & Sunday, January 25th & 26th, from 1:00-3:00pm. MUST SEE VIRTUAL TOUR!

KEY INFORMATION

MLS® R2957847

Residential Attached

Chilliwack

4 Bedrooms

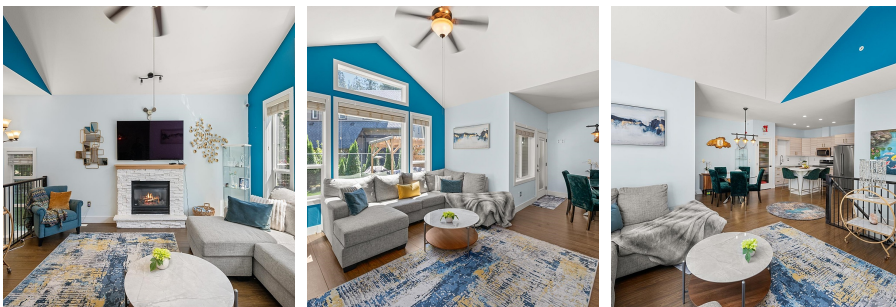
3 Bathrooms

2,152 SF

FEATURES

Year Built: 2011

Listed By: rennie & associates realty ltd.



Shelly Vellani PREC*
604.710.3681
svellani@rennie.com
rennie.com/shellyvellani



Eric Zamora PREC*
778.389.4556
ezamora@rennie.com
rennie.com/ericzamora

rennie