

1504 6888 Station Hill Drive, Burnaby

\$799,800



Welcome to the Savoy Carlton in City in the Park. Featuring a spacious 1214 sq ft 2 bedroom/2 bathroom north facing corner unit. Beautiful views of the north shore mountains, the city, sunset and sunrise views! Unit includes laminate flooring & a covered balcony. Amenities include an indoor swimming pool/hot tub, sauna, theatre room, library, exercise centre, social room and rec room with a pool table! This complex is surrounded by tons of walking trails & parks and is steps to Kim's Market, Edmonds Skytrain Station and Taylor Park Elementary School! Short distance to Highgate Shopping Village with your Save-On-Foods, Shoppers Drug Mart, banks & tons of restaurants and shops. Walk to Byrne Creek Secondary & Rosemary Brown Recreation Centre.

KEY INFORMATION

MLS® R2957908

Residential Attached

South Slope

2 Bedrooms

2 Bathrooms

1,214 SF

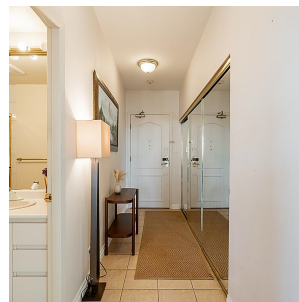
\$627.70 Maintenance Fees

FEATURES

Year Built: 1992

Views: MOUNTAINS & CITY

Listed By: RE/MAX Crest Realty



rennie