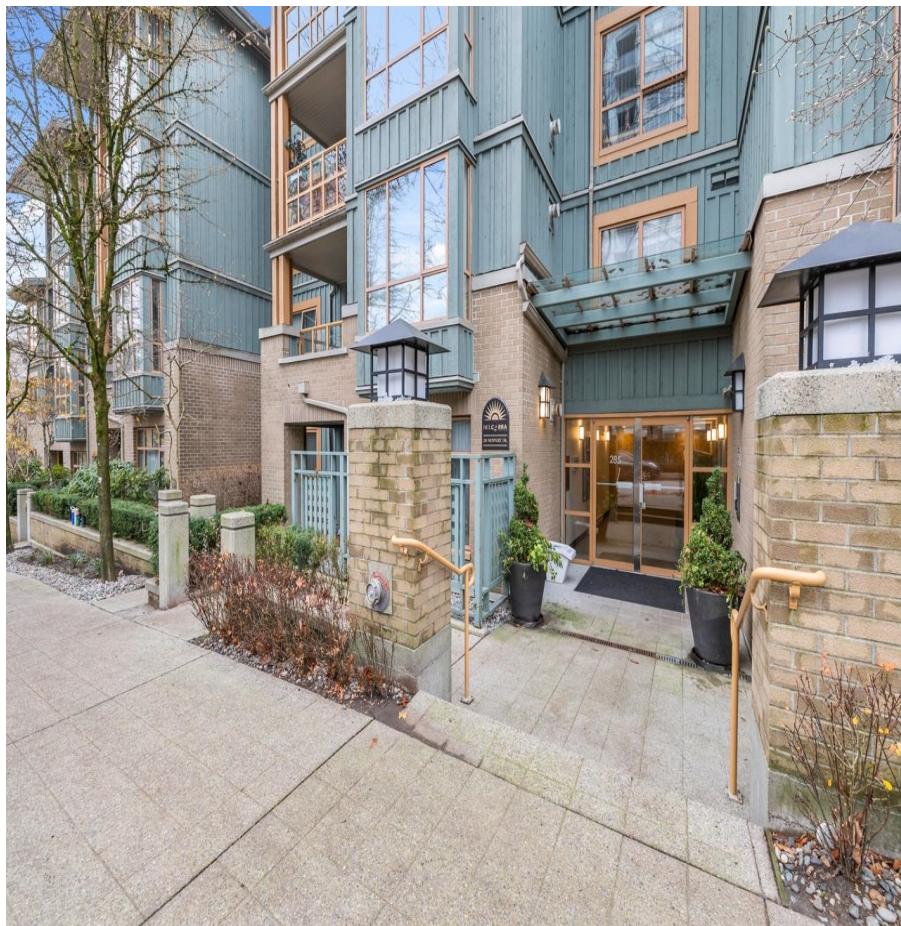


103 285 Newport Drive, Port Moody

\$869,900



This garden-level home offers two spacious bedrooms, two bathrooms, and an open-concept design perfect for both relaxing and entertaining. Step out to your private, covered 100 sq/ft patio for year-round enjoyment or cozy up by the gas fireplace on cooler evenings. The primary bedroom features a walk-in closet and a luxurious 4-piece ensuite. Additional highlights include two side-by-side parking spaces, a secure storage locker, and access to great amenities like a fitness center, amenity room, and bike storage. Located in award-winning Newport Village, you're just steps from boutique shops, dining, and essentials, with SkyTrain, West Coast Express, Brewery Row, and Rocky Point Park all nearby. Welcome home! Open House Sat Jan 25 & Sun 26 2:00-4:00

KEY INFORMATION

MLS® R2957787

Residential Attached

North Shore Port Moody

2 Bedrooms

2 Bathrooms

991 SF

\$471.01 Maintenance Fees

FEATURES

Year Built: 2003

Views: Court Yard

Listed By: Macdonald Realty (Surrey/152)

