

# 502 9633 Manchester Drive, Burnaby

\$648,900



Spacious 2-bedroom, 2-bath condo at Strathmore Towers near Lougheed Town Centre! 935 sqft South facing corner unit with a large covered patio. Low maintenance fees and great amenities: pool, hot tub, gym, sauna, tennis court, and garden. Minutes to Lougheed Mall, SkyTrain, and 15 minutes to SFU. Includes secure parking and storage and the building is Pet Friendly. Showings by appointment Only! (Sunday 2pm and Wed 5:00pm)

## KEY INFORMATION

MLS® R2958780

Residential Attached

Cariboo

2 Bedrooms

2 Bathrooms

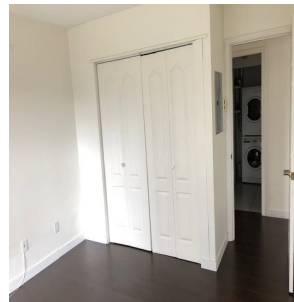
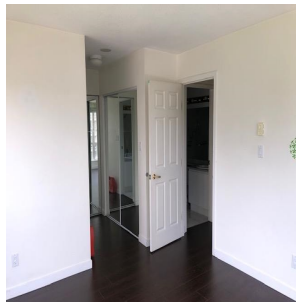
935 SF

\$400.33 Maintenance Fees

## FEATURES

Year Built: 1994

Listed By: Heller Murch Realty



rennie