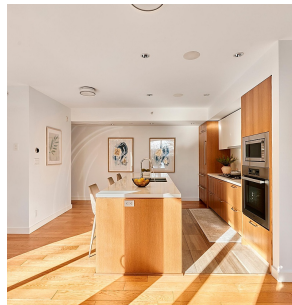
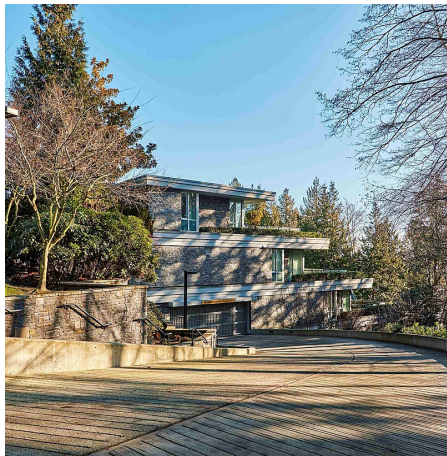


301 988 Keith Road, West Vancouver

\$1,890,000



EVELYN presents architect-designed luxury condominiums in the prestigious Park Royal location. Each room features bay windows, offering abundant natural light. 2-bedrooms, 2 + 1/2-bathrooms condo boasts a spacious landscaped terrace accessible from all rooms, ensuring ample privacy. With a southern exposure, the unit receives plenty of sunlight, surrounded by forest providing excellent privacy for both the rooms and the balcony. This unit includes two side-by-side parking stalls with a personal security gate. Additionally, there are two large storage spaces measuring 15' x 6'8 and 13' x 8'6. Enjoy the convenience of walking to the park, Royal Mall, marina, transit, and highway access. Great school catchment area. (Hollyburn Elementary, West Vancouver Secondary) Open House Jan 26th 2-4

KEY INFORMATION

MLS® R2958942

Residential Attached

Park Royal

2 Bedrooms

3 Bathrooms

1,528 SF

\$1,394.96 Maintenance Fees

FEATURES

Year Built: 2013

Views: Tranquil Forest/Green Belt

Listed By: LeHomes Realty Premier

rennie