

14 4033 Dominion Street, Burnaby

\$865,000



Welcome to Parkview Townhomes, nestled in the heart of Cascade Heights and situated next to Broadview Park at the end of a quiet cul-de-sac. Discover the perfect blend of modern design and comfort in this stunning 905 sq ft corner townhome. Featuring 2bed, 2bath, and a walk-in closet in the primary bedroom, this residence offers ample space for relaxed living. The open-concept kitchen flows seamlessly into the living and dining areas, ideal for hosting or quiet nights in. Enjoy the privacy of a corner unit with an exclusive outdoor space. This home includes 2 PARKING SPACES and is conveniently located near Gilmore SkyTrain, Brentwood Mall, and Metrotown, this home also includes one parking spot and a storage locker. Don't miss this Burnaby gem! Open House CANCELLED.

KEY INFORMATION

MLS® R2958297

Residential Attached

Central Burnaby

2 Bedrooms

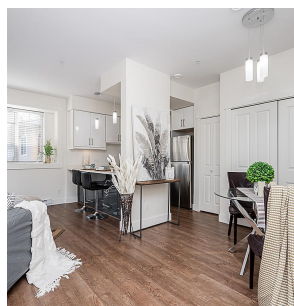
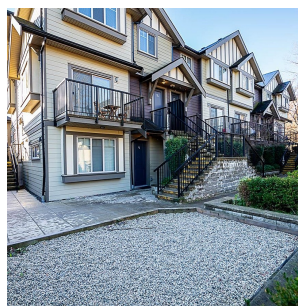
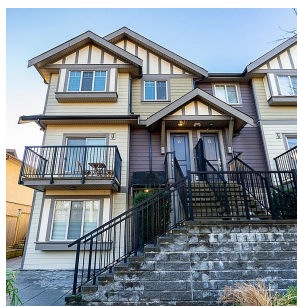
2 Bathrooms

905 SF

FEATURES

Year Built: 2020

Listed By: rennie & associates realty ltd.



Heather Chua PREC*

778.388.1436

hchua@rennie.com

rennie.com/heatherchua

rennie