

8515 Ansell Place, West Vancouver

\$2,580,000



SUNSET POINT - AN EXCLUSIVE PLACE TO LIVE! Welcome to this tastefully remodeled home, updated in 2020! This stunning 3,700 sq. ft. property is situated on a sunny 12,000 sq. ft. corner lot in a peaceful, family-friendly neighborhood. Move-in ready, the home offers 4 bedrooms and 3 bathrooms, including a spacious 1-bedroom in-law suite on the main floor—perfect for extended family or as a mortgage helper. Upstairs, you'll find 3 bedrooms, including a generously sized master suite with a luxurious 5-piece ensuite. The bright and airy living and dining areas, along with an expansive gourmet kitchen, seamlessly connect to an oversized south-facing patio, offering breathtaking water views—ideal for family gatherings or entertaining guests. Don't miss this incredible opportunity!

KEY INFORMATION

MLS® R2959872

Residential Detached

Howe Sound

4 Bedrooms

3 Bathrooms

3,695 SF

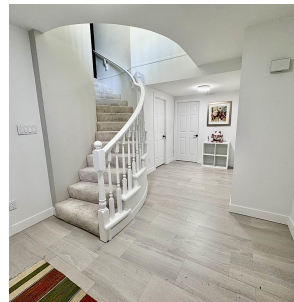
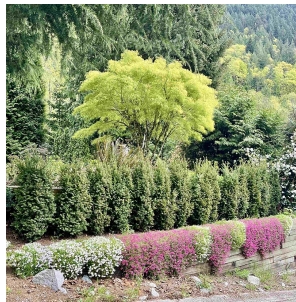
12,000 SF Lot

FEATURES

Year Built: 1987

Views: MOUNTAIN AND WATER

Listed By: Royal Regal Realty Ltd.



rennie