

# 152 2451 N Grandview Highway, Vancouver

\$589,900



Discover modern urban living in this 1-bedroom & 1-bathroom at The Cut, located in East Van's vibrant Trout Lake neighbourhood. Spacious Japandi styled interiors. 9' ceilings & oversized windows. Chef's kitchen features premium Italian integrated appliance package, Dekton countertops, Kohler fixtures and ample storage. Individually controlled air conditioning. Expansive outdoor spaces with water connections for every home. Residents enjoy a serene atmosphere while being a short walk to the Drive's retail, dining, entertainment & a short walk to Commercial/Broadway & Renfrew SkyTrain Stations. Move in Summer 2026. Presentation Centre located@ 1816 Commercial Drive.

## KEY INFORMATION

MLS® R2960430

Residential Attached

Renfrew Heights

1 Bedroom

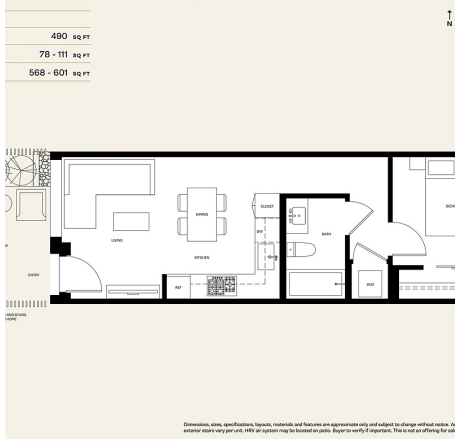
1 Bathroom

490 SF

## FEATURES

Year Built: 2026

Listed By: Magnum Projects Ltd.



Dimensions, views, specifications, fixtures, materials, and features are approximate only and subject to change without notice. An exterior view is provided for each unit. All floor options may be limited or pending. Buyer to verify all information. This is not an offering for sale.

rennie