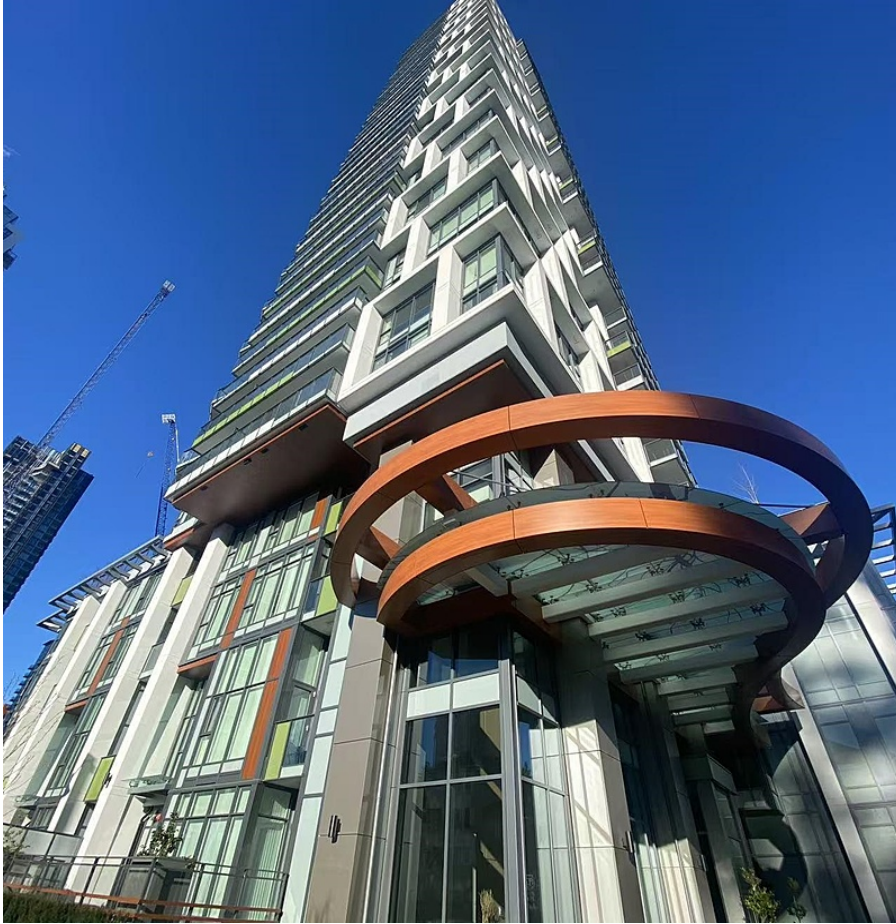


2604 1182 Westwood Street, Coquitlam

\$799,000



Experience urban living at its finest in SOPHORA AT THE PARK by Polygon! This air-conditioned, Northeast-facing 2 bed 2 bath unit offers stunning panoramic views of Glen Park and Mountain Burke. The open-concept design features a spacious kitchen with Bosch appliances, quartz countertops, and a large center island. The layout ensures privacy with separated bedrooms, including a primary suite with a spa-inspired ensuite. Relax on the balcony or enjoy the clubhouse amenities, including a fitness center, yoga studio, party room, and outdoor BBQ area. Perfectly located in Coquitlam Town Centre near SkyTrain, shopping, restaurants, Lafarge Lake, and more.

KEY INFORMATION

MLS® R2960557

Residential Attached

North Coquitlam

2 Bedrooms

2 Bathrooms

783 SF

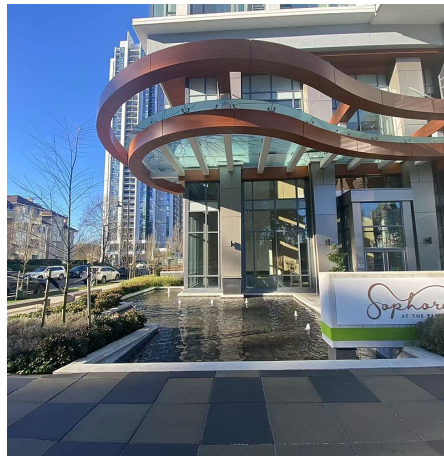
\$314.39 Maintenance Fees

FEATURES

Year Built: 2023

Views: CITY, PARK & MOUNTAIN

Listed By: Pan Pacific Canada Realty Inc.



rennie